

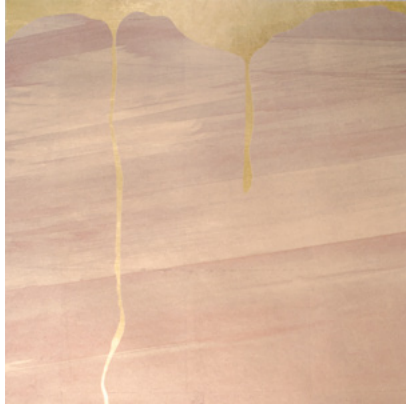
**Calico**

# SATORI

Tear Sheet



Satori features a striking metallic line that is inspired by Kintsugi.



ECHO



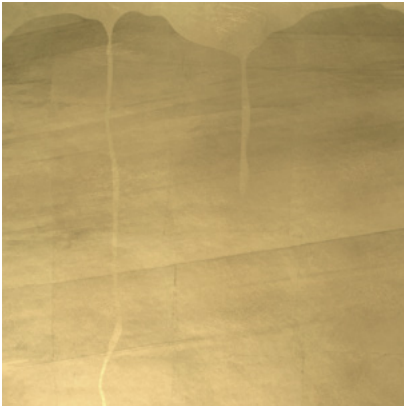
FIR



MOUNTAIN



PLATEAU



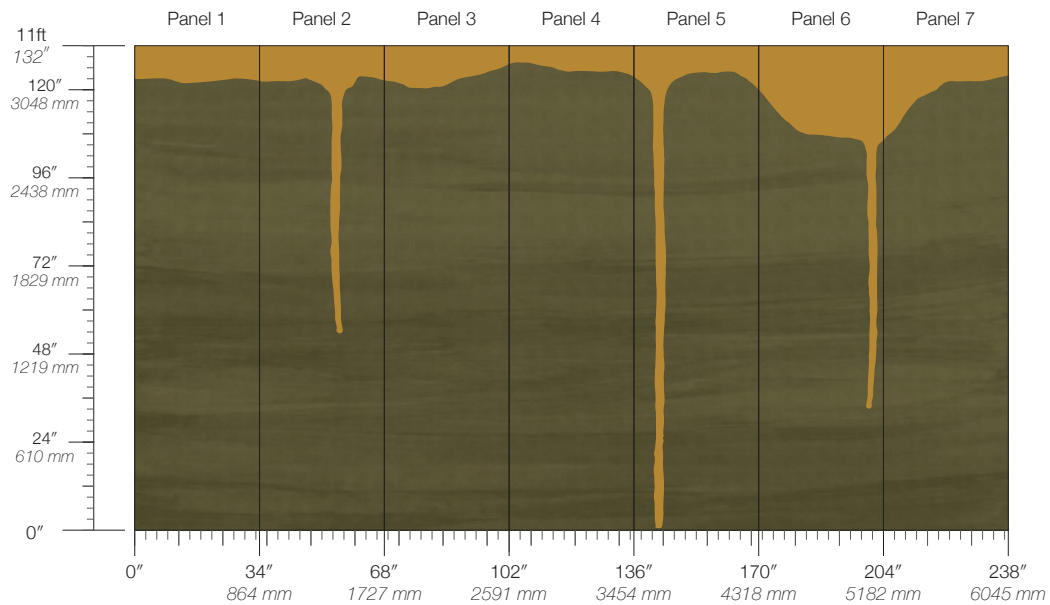
WILDFIRE



ZENITH

# Satori Fir

Suitable for residential and some commercial projects



**COLOR**

Fir

**STOCK**

Made to order

**REPEAT**

Non-repeating

**CONTACT**

sales@calicowallpaper.com  
+1 718 243 1705  
57 Lispenard Street  
New York, NY 10013 USA

**ITEM**

1802

**MINIMUM**

1 panel

**LEAD TIME**

4 weeks to print

**CONTENT**

Dutch Metal Leaf

**MAINTENANCE**

Water-based cleanser

**ORIGIN**

USA

**DISCLAIMER**

Panel maps represent mural artwork only. Reference the physical sample for color and texture.

**PANEL WIDTH**

34" / 864 mm trimmed

**FLAMMABILITY**

ASTM E84 Adhered Class A

**DETAILS**

Custom options available

**PANEL HEIGHT**

132" / 3353 mm standard

**ENVIRONMENTAL**

Formaldehyde Free,  
Heavy Metal Free

**PRICE**

Available upon request