

Calico

PRISM

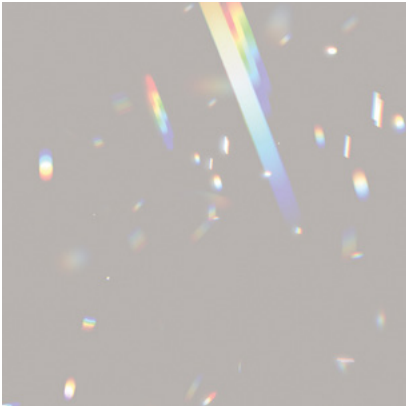
Tear Sheet



Prism is inspired by the refraction and diffusion of light.



CHROMA



FLARE



HALO



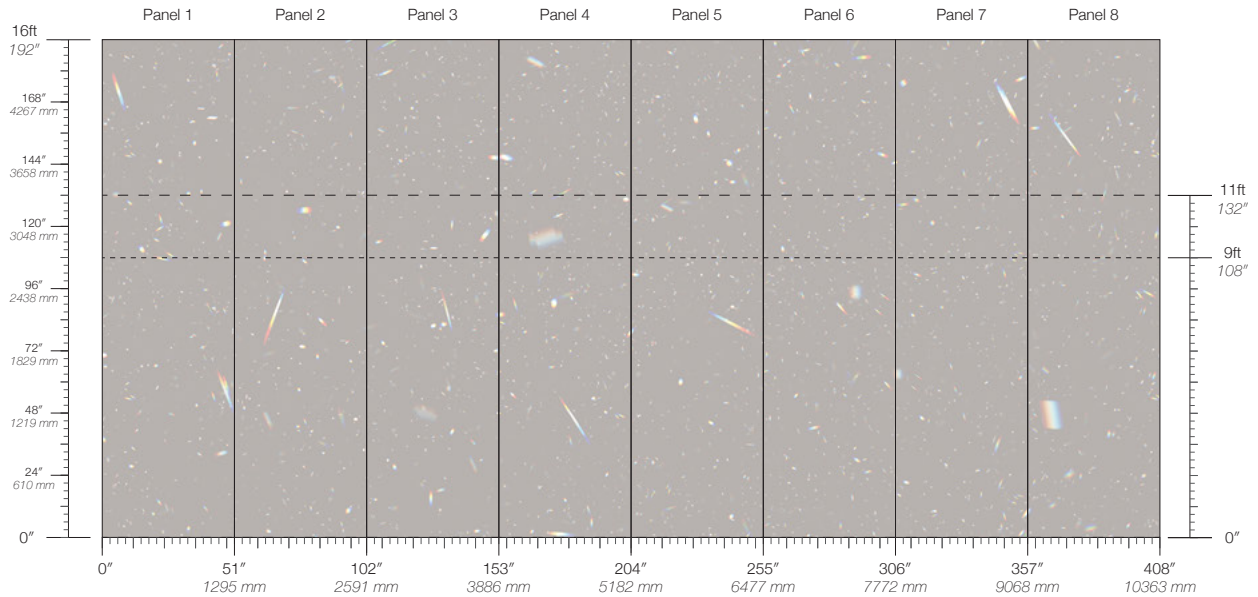
LUMA



SOLAR

Prism Flare

Suitable for residential and commercial projects



COLOR

Flare

ITEM

3102

CONTENT

Type II Vinyl

PANEL WIDTH

51" / 1295 mm trimmed

PANEL HEIGHT

108" / 2743 mm base
132" / 3353 mm standard
192" / 4877 mm extended

REPEAT

Non-repeating

STOCK

Made to order

LEAD TIME

4 weeks to print

MINIMUM

1 panel

PRICE

Available upon request

ORIGIN

USA

DETAILS

Custom options available

MAINTENANCE

Water-based cleanser

ENVIRONMENTAL

EPD & HPD Available
Low VOC
Contributes to LEED v4
11% Recycled Content
Phthalate Free
California Prop 65 Compliant

SPECS

Commercial Vinyl Face
Non-Woven Backing
13.33 oz/yd²
452 g/m²
Smooth metallic/pearlescent texture

TESTING

ASTM E84 Adhered Class A
CAN/ULC-S102
EN 15102 Class B, s2
CDPH CA Section 01350

DISCLAIMER

Refer to our website to see the full mural artwork. Reference the physical sample for color and texture. Panel maps represent mural artwork only.