

**Calico**

# PRISM

Tear Sheet



Prism is inspired by the refraction and diffusion of light.



CHROMA



FLARE



HALO



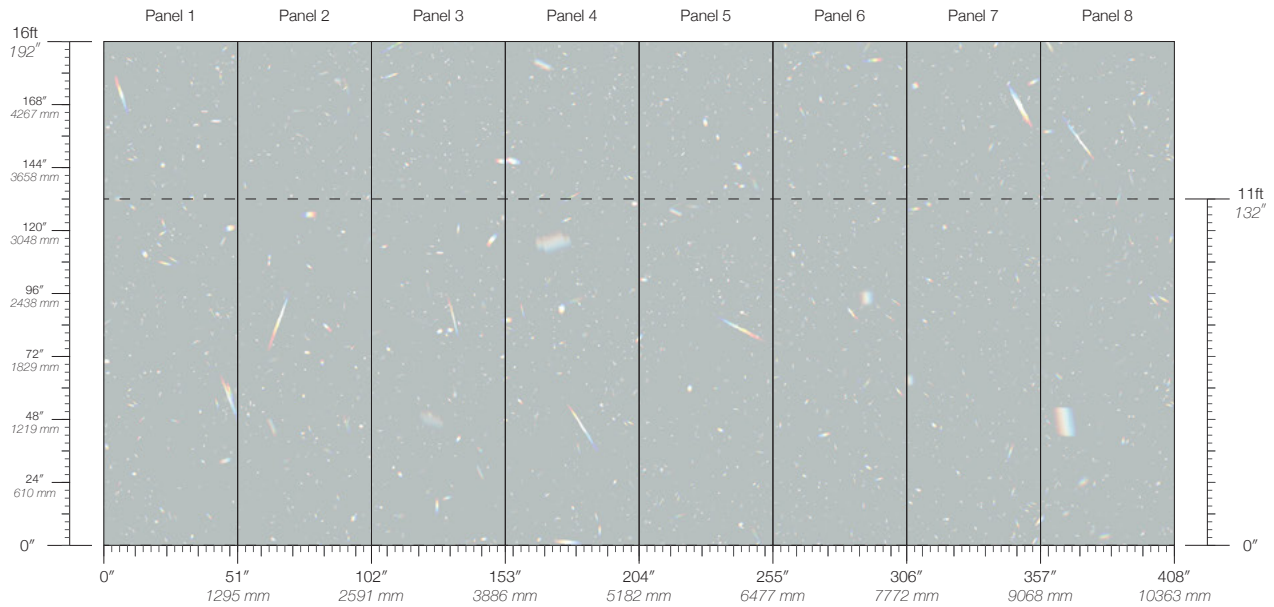
LUMA



SOLAR

# Prism Chroma

Suitable for residential and commercial projects



**COLOR**  
Chroma

**STOCK**  
Made to order

**REPEAT**  
Non-repeating

**CONTACT**  
sales@calicowallpaper.com  
+1 718 243 1705  
57 Lispenard Street  
New York, NY 10013 USA

**ITEM**  
3101

**MINIMUM**  
1 panel

**LEAD TIME**  
4 weeks to print

**CONTENT**  
Type II Vinyl

**MAINTENANCE**  
Water-based cleanser

**ORIGIN**  
USA

**DISCLAIMER**  
Panel maps represent mural artwork only. Reference the physical sample for color and texture.

**PANEL WIDTH**  
51" / 1295 mm trimmed

**FLAMMABILITY**  
ASTM E84 Adhered Class A

**DETAILS**  
Custom options available

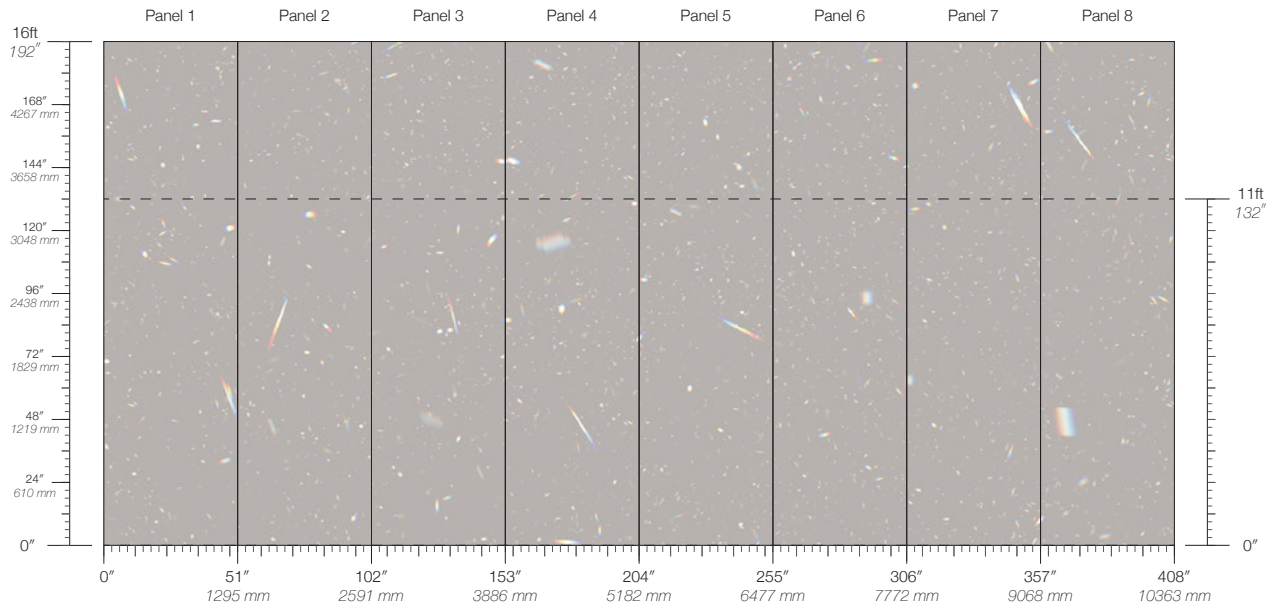
**PANEL HEIGHT**  
132" / 3353 mm standard  
192" / 4877 mm extended

**ENVIRONMENTAL**  
Recycled Content, Phthalate Free  
Low VOC, HPD Available

**PRICE**  
Available upon request

# Prism Flare

Suitable for residential and commercial projects



**COLOR**  
Flare

**STOCK**  
Made to order

**REPEAT**  
Non-repeating

**CONTACT**  
sales@calicowallpaper.com  
+1 718 243 1705  
57 Lispenard Street  
New York, NY 10013 USA

**ITEM**  
3102

**MINIMUM**  
1 panel

**LEAD TIME**  
4 weeks to print

**CONTENT**  
Type II Vinyl

**MAINTENANCE**  
Water-based cleanser

**ORIGIN**  
USA

**DISCLAIMER**  
Panel maps represent mural artwork only. Reference the physical sample for color and texture.

**PANEL WIDTH**  
51" / 1295 mm trimmed

**FLAMMABILITY**  
ASTM E84 Adhered Class A

**DETAILS**  
Custom options available

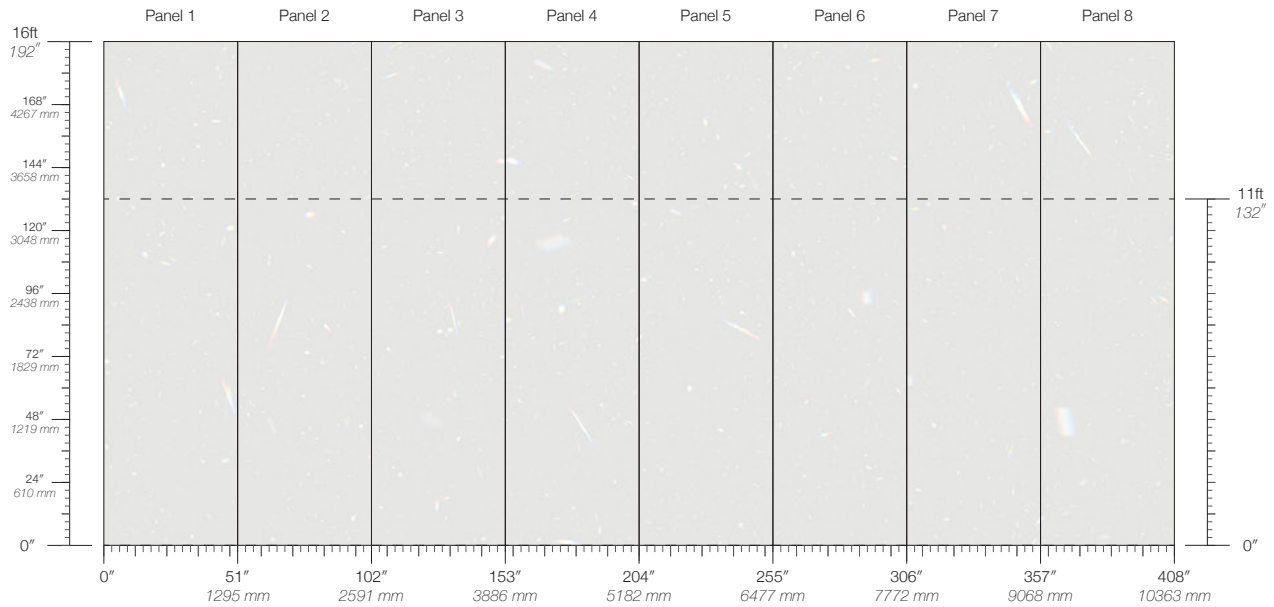
**PANEL HEIGHT**  
132" / 3353 mm standard  
192" / 4877 mm extended

**ENVIRONMENTAL**  
Recycled Content, Phthalate Free  
Low VOC, HPD Available

**PRICE**  
Available upon request

# Prism Halo

Suitable for residential and commercial projects



**COLOR**  
Halo

**STOCK**  
Made to order

**REPEAT**  
Non-repeating

**CONTACT**  
sales@calicowallpaper.com  
+1 718 243 1705  
57 Lispenard Street  
New York, NY 10013 USA

**ITEM**  
3103

**MINIMUM**  
1 panel

**LEAD TIME**  
4 weeks to print

**CONTENT**  
Type II Vinyl

**MAINTENANCE**  
Water-based cleanser

**ORIGIN**  
USA

**DISCLAIMER**  
Panel maps represent mural artwork only. Reference the physical sample for color and texture.

**PANEL WIDTH**  
51" / 1295 mm trimmed

**FLAMMABILITY**  
ASTM E84 Adhered Class A

**DETAILS**  
Custom options available

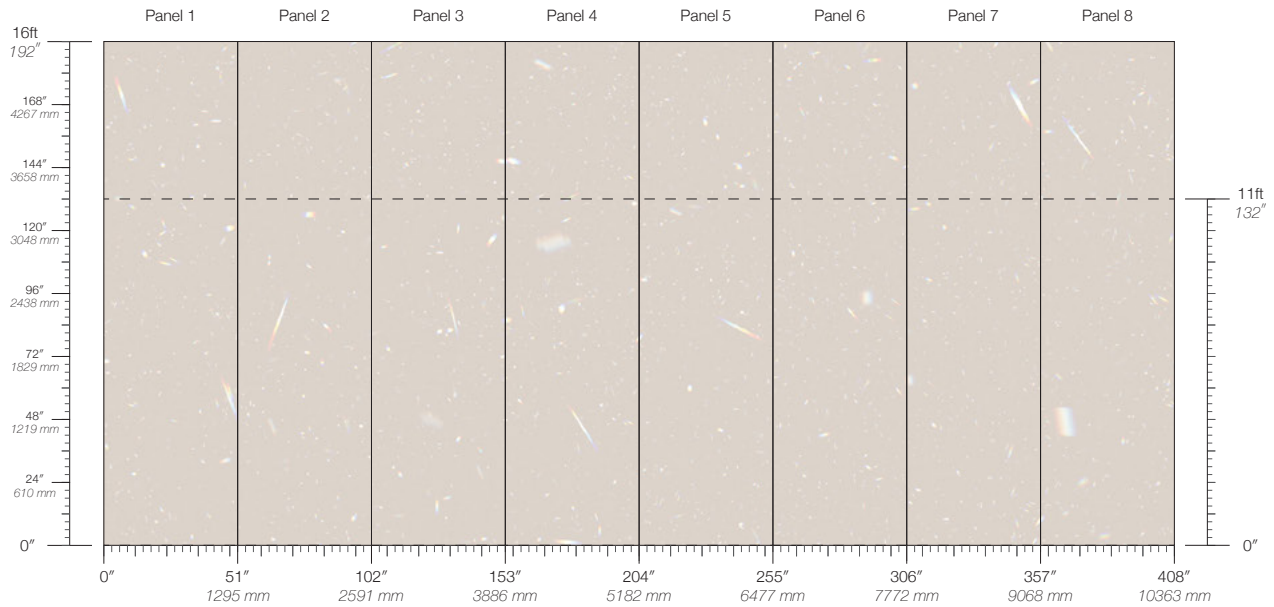
**PANEL HEIGHT**  
132" / 3353 mm standard  
192" / 4877 mm extended

**ENVIRONMENTAL**  
Recycled Content, Phthalate Free  
Low VOC, HPD Available

**PRICE**  
Available upon request

# Prism Luma

Suitable for residential and commercial projects



**COLOR**  
Luma

**STOCK**  
Made to order

**REPEAT**  
Non-repeating

**CONTACT**  
sales@calicowallpaper.com  
+1 718 243 1705  
57 Lispenard Street  
New York, NY 10013 USA

**ITEM**  
3104

**MINIMUM**  
1 panel

**LEAD TIME**  
4 weeks to print

**CONTENT**  
Type II Vinyl

**MAINTENANCE**  
Water-based cleanser

**ORIGIN**  
USA

**DISCLAIMER**  
Panel maps represent mural artwork only. Reference the physical sample for color and texture.

**PANEL WIDTH**  
51" / 1295 mm trimmed

**FLAMMABILITY**  
ASTM E84 Adhered Class A

**DETAILS**  
Custom options available

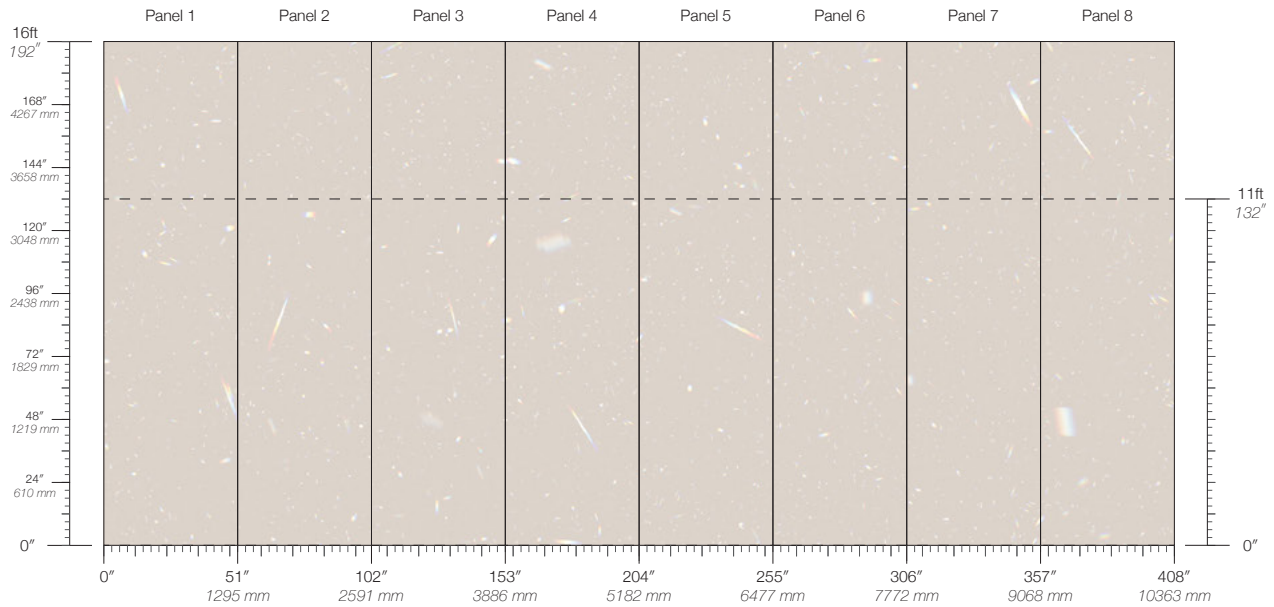
**PANEL HEIGHT**  
132" / 3353 mm standard  
192" / 4877 mm extended

**ENVIRONMENTAL**  
Recycled Content, Phthalate Free  
Low VOC, HPD Available

**PRICE**  
Available upon request

# Prism Solar

Suitable for residential and commercial projects



**COLOR**  
Solar

**STOCK**  
Made to order

**REPEAT**  
Non-repeating

**CONTACT**  
sales@calicowallpaper.com  
+1 718 243 1705  
57 Lispenard Street  
New York, NY 10013 USA

**ITEM**  
3105

**MINIMUM**  
1 panel

**LEAD TIME**  
4 weeks to print

**CONTENT**  
Type II Vinyl

**MAINTENANCE**  
Water-based cleanser

**ORIGIN**  
USA

**DISCLAIMER**  
Panel maps represent mural artwork only. Reference the physical sample for color and texture.

**PANEL WIDTH**  
51" / 1295 mm trimmed

**FLAMMABILITY**  
ASTM E84 Adhered Class A

**DETAILS**  
Custom options available

**PANEL HEIGHT**  
132" / 3353 mm standard  
192" / 4877 mm extended

**ENVIRONMENTAL**  
Recycled Content, Phthalate Free  
Low VOC, HPD Available

**PRICE**  
Available upon request