

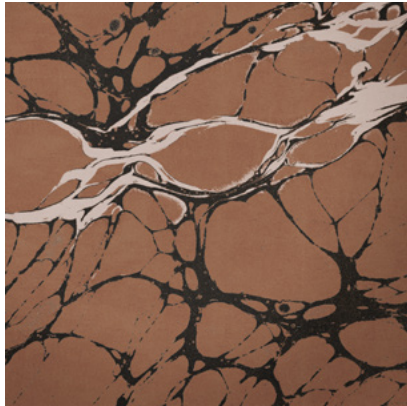


Calico

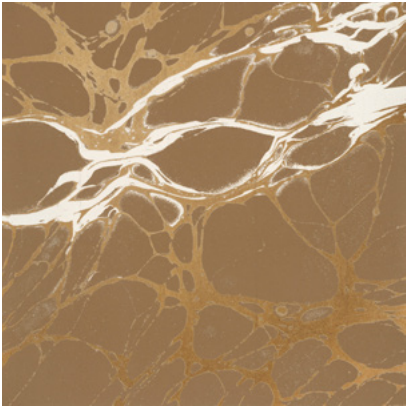
NIGHT

Tear Sheet

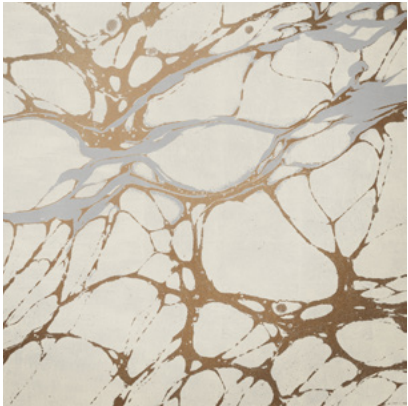
Night is an exploration of the duality of darkness and light.



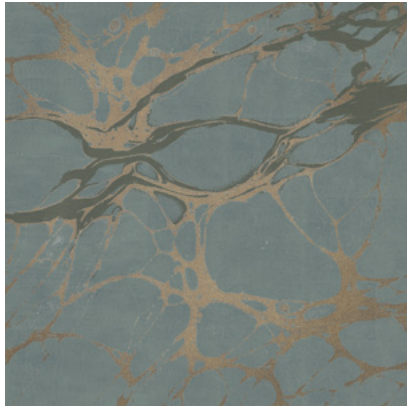
BRICK



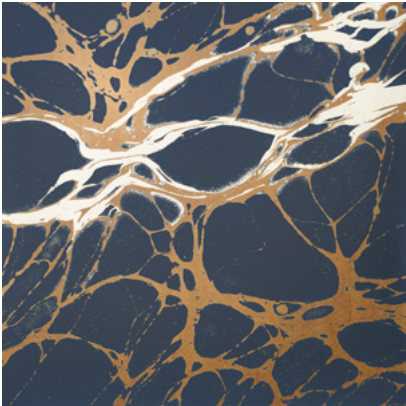
COPPER



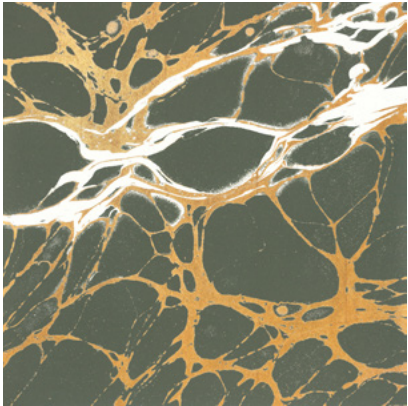
ECRU



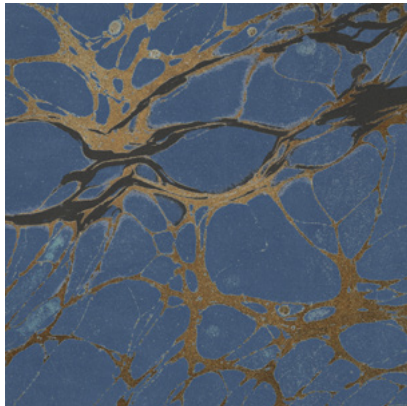
GLAZE



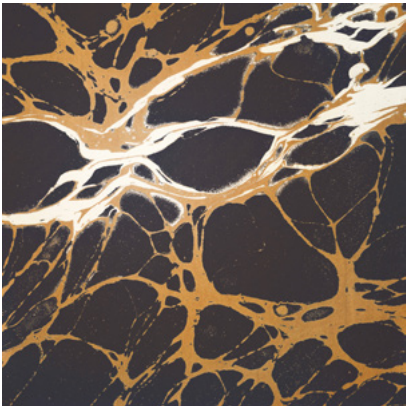
INDIGO



PERIDOT



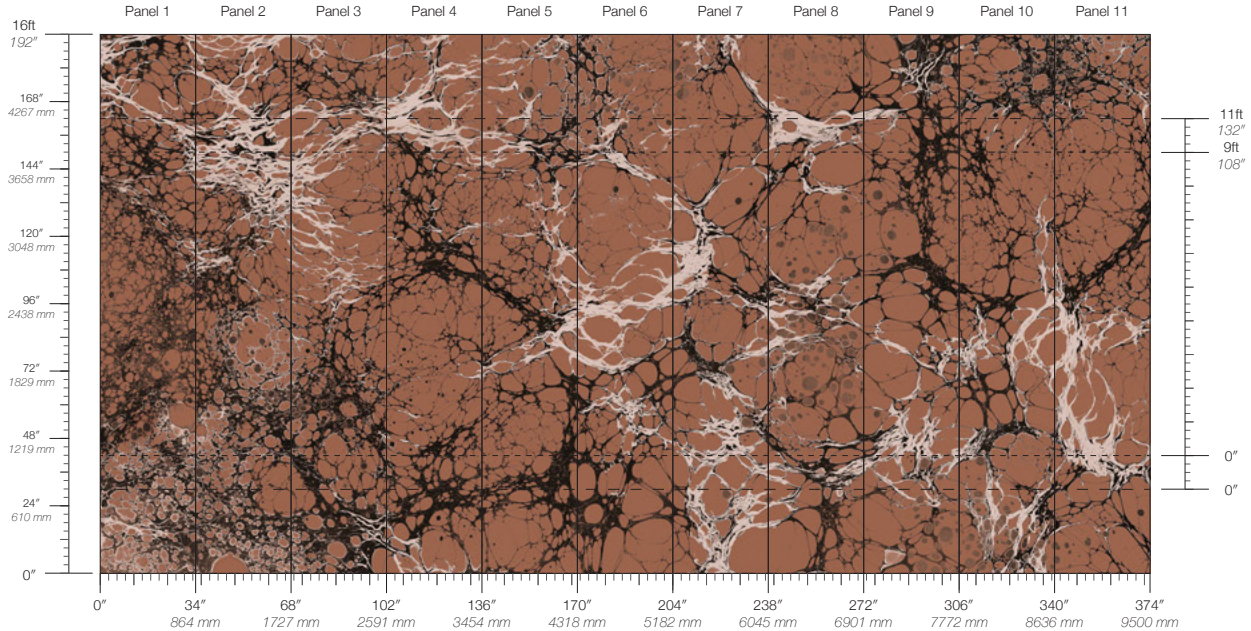
ROYAL



SLATE

Night Brick

Suitable for residential and some commercial projects



COLOR

Brick

REPEAT

Non-repeating

DETAILS

Custom options available

TESTING

ASTM E84 Adhered Class A
EN 15102 Class D-s3 / d2

ITEM

1619

STOCK

Made to order

MAINTENANCE

Water-based cleanser

DISCLAIMER

Refer to our website to see the full mural artwork. Reference the physical sample for color and texture. Panel maps represent mural artwork only.

CONTENT

Dutch Metal Leaf

LEAD TIME

4 weeks to print

ENVIRONMENTAL

Formaldehyde Free
Heavy Metal Free
PVC Free

PANEL WIDTH

34" / 864 mm trimmed

MINIMUM

1 panel

SPECS

Paper-Backed Metal Leaf
7.2 oz/yd²
244 g/m²
Smooth Metallic Surface with Hand-Applied Leaf

PANEL HEIGHT

108" / 2743 mm base
132" / 3353 mm standard
192" / 4877 mm extended

PRICE

Available upon request

ORIGIN

USA