



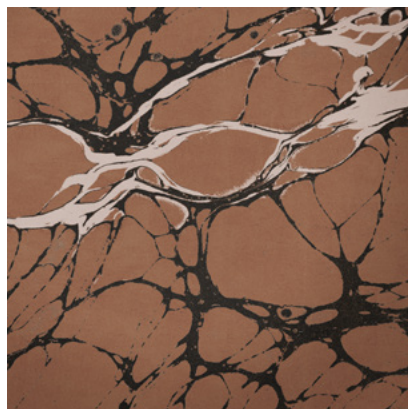
Calico

# NIGHT

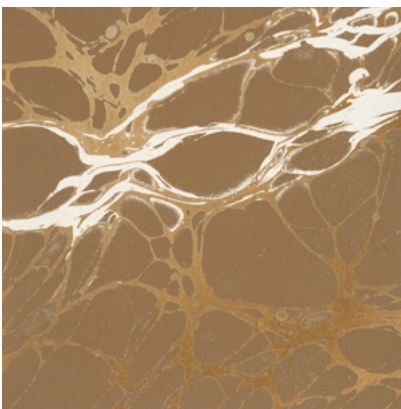
Tear Sheet



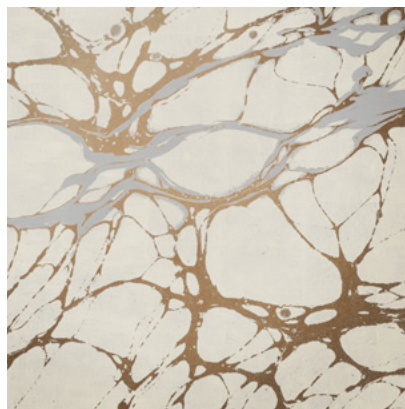
Night is an exploration of the duality of darkness and light.



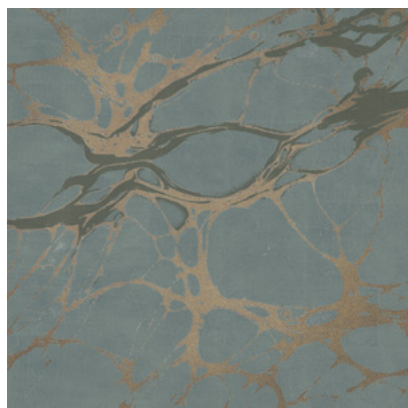
BRICK



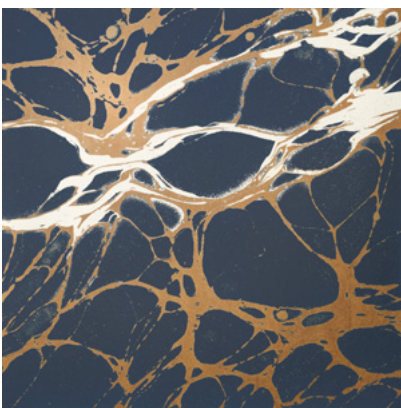
COPPER



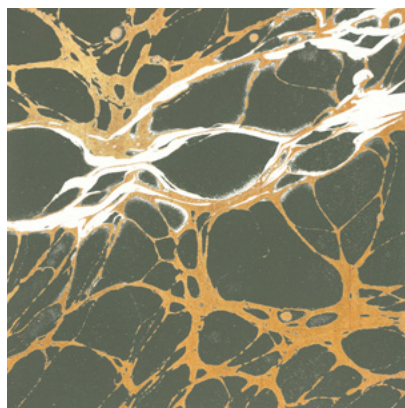
ECRU



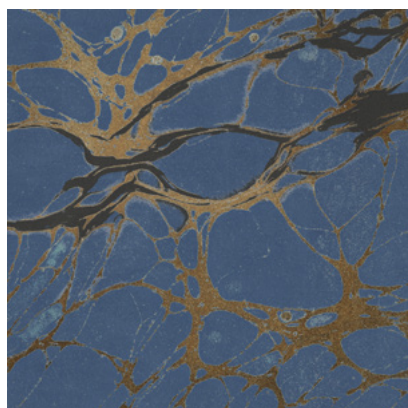
GLAZE



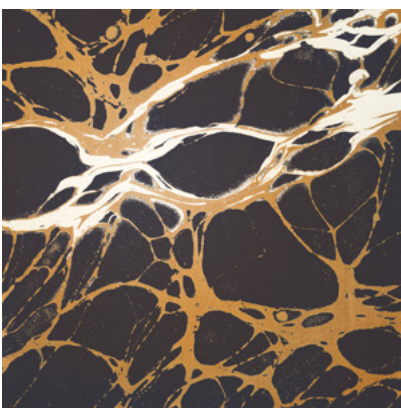
INDIGO



PERIDOT



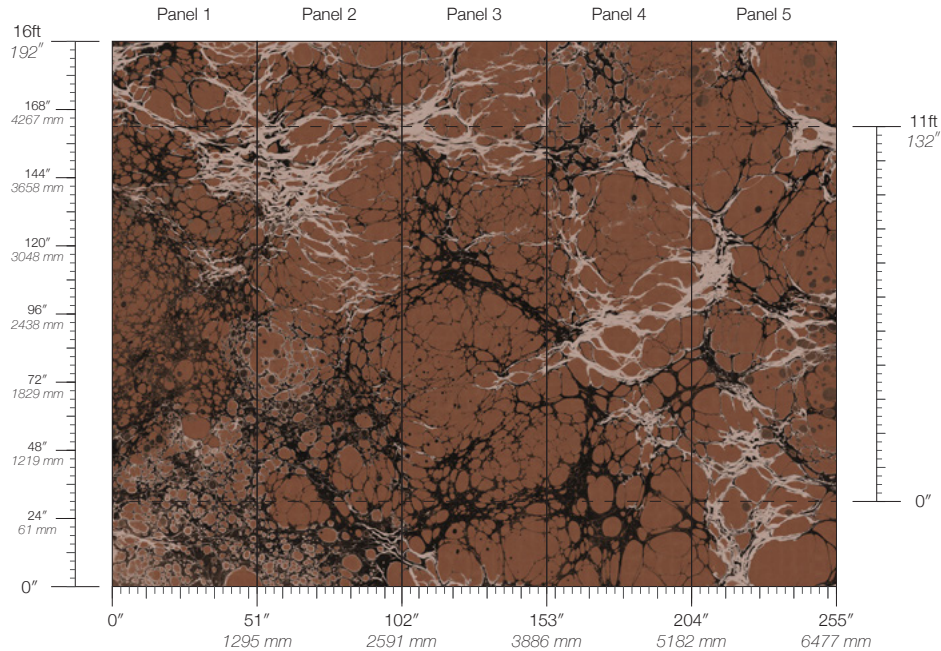
ROYAL



SLATE

# Night Brick

Suitable for residential and commercial projects



## COLOR

Brick

## ITEM

1614

## CONTENT

Type II Vinyl

## PANEL WIDTH

51" / 1295 mm trimmed

## PANEL HEIGHT

132" / 3353 mm standard  
192" / 4877 mm extended

## REPEAT

Non-repeating

## STOCK

Made to order

## LEAD TIME

4 weeks to print

## MINIMUM

1 panel

## PRICE

Available upon request

## ORIGIN

USA

## DETAILS

Custom options available

## ENVIRONMENTAL

Recycled Content

Phthalate Free

Low VOC

HPD Available

## SPECS

Commercial Vinyl face

Non-woven backing

20 oz per linear yard

620 g per linear meter

Smooth reflective metallic texture

## TESTING

(US) ASTM E84 Adhered Class A

(EU) EN 15102 Class B, s2

(CN) CAN/ULC-S102.2 Class A

CCC-W-408D Type II

WA Specification W-101 Type II

## MAINTENANCE

Water-based cleanser

## CONTACT

[sales@calicowallpaper.com](mailto:sales@calicowallpaper.com)

+1 718 243 1705

57 Lispenard Street

New York, NY 10013 USA

## DISCLAIMER

Refer to our website to

see the full mural artwork.

Reference the physical sample

for color and texture. Panel

maps represent mural

artwork only.